



Surface finish of temporary crowns and bridges with Luxatemp-Glaze & Bond



Dr. Sebastian Mues

Example case

Based on a patient case the difference between an unpolished temporary, a conventionally finished temporary, and a temporary varnished with Luxatemp®-Glaze & Bond (DMG, Hamburg) is outlined and the procedures described. The images show a comprehensive temporary restoration to demonstrate the effect more clearly. In the interim, to illustrate the different surface qualities, the temporary is shown also with one half polished and one half untreated. In the course of the photo series the polished half of the temporary is then contrasted to the varnished half. After minor shade corrections with dental composite shades or LuxaFlow®-Fluorescence (DMG, Hamburg) the finished restoration is integrated. The result is a high quality, esthetically pleasing restoration that enables sufficient periodontal hygiene and satisfies both the dentist and the patient.

Initial situation after a treatment performed alio loco with an insufficient temporary (Figs. 1+2). A situation impression is taken with StatusBlue® (DMG, Hamburg). Following the fabrication of a model and filling of the undercontoured areas on the model, a vacuum formed template was made for the fabrication of the temporary (Fig. 3).

A shade was selected for the new temporary: for the incisal area one layer of Luxatemp®-Fluorescence Bleach light, for the central area colour A2 and for the cervical area colour A3.5 to match the natural shading of the teeth (Fig. 4).

The removed temporary reveals the color gradient from the incisal to the cervical area.

The next step includes the finishing of the cervical, approximal, and incisal areas by slightly separating the incisal edges and allowing sufficient space for the cervical papilla (Fig. 5).

The fit and occlusion is evaluated intraorally and optimized if needed (Fig. 6).

The restoration in the fourth quadrant is finished with a conventional polish, and, in the following image, contrasted to the area in the third quadrant which was treated with burs only (Fig. 7).

The next image shows the situation with varnished teeth in the third quadrant in comparison to the polished teeth in the fourth quadrant. The difference of the surface condition is clearly noticeable; the varnished portions of the temporary exhibit more pronounced smoothness and shine (Fig. 8).

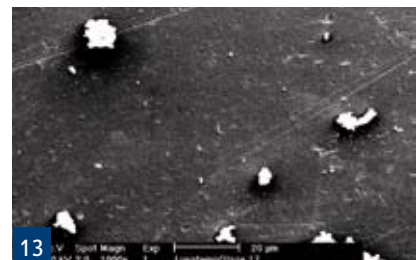
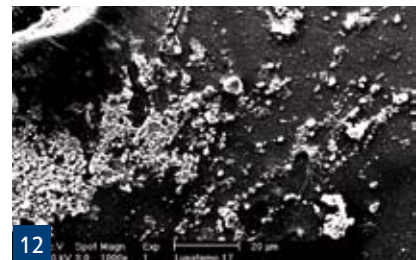
And the difference is clearly visible intraorally as well (Fig. 9).

Finally, a slight shade correction is made (with LuxaFlow-Fluorescence von DMG, Hamburg) (Fig. 10).

For information only



For information only



The new restoration in situ (Fig. 11). The temporary can be seated with Tempo-CemNE® (DMG, Hamburg). The smooth surface and finish present a satisfactory esthetic appearance and enable proper oral hygiene.

A clinical study by Mues et al. (DZZ, 3/2008) clearly revealed the plaque reducing effect of the varnish. The following SEM images show the surface of a polished and a varnished temporary after a wearing time of ten days each (Figs. 12+13).

Contact address

Dr. med. dent. Sebastian Mues, M.Sc.
(Parodontologie)
Scharenberg 34
53577 Neustadt (Wied)
Dr.S.Mues@gmx.de

| April 2008